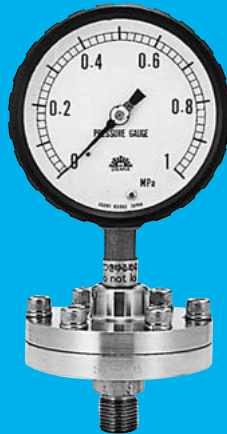


DIAPHRAGM-SEAL PRESSURE GAUGES

Construction

The space between the Bourdon-tube element and the corrugated diaphragm is filled with a special temperature stable liquid functioning as a pressure medium. Thus the pressure of the liquid medium to be measured drives the diaphragm, the flexing of which is then transmitted to the Bourdon-tube element via the special liquid.

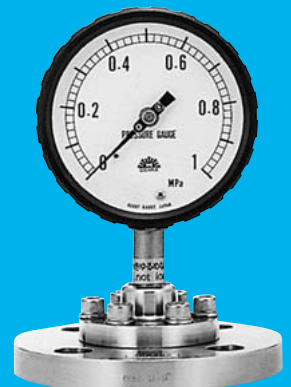
The connection is available in a choice of two designs, screw and flange types, each designed for ease of cleaning the diaphragm.



MODEL No. 841S
Threaded Type



MODEL No. 841A
A Flange Type



MODEL No. 841B
B Flange Type

Features

1. The diaphragm and the intake bore are large enough to ensure easy service, making the instrument suitable for measuring highly viscous yet solidification-prone process media.
2. Diaphragms are available in such anticorrosive materials as stainless steel, tantalum, and teflon.
3. A metallic diaphragm is secured by a welding process and encased in two flanges.
4. The gauge and the diaphragm-seal unit can be connected by a flexible tube up to 15 meters long so as to achieve remote measurement.
5. The built-in zero adjuster allows for easy correction of an indication error caused by an extreme variation of ambient temperatures and other factors.
6. The diaphragm-seal unit is constructed to high pressure strength. Should the element be broken, the process medium will not be allowed to leak out of the instrument.

Coding of model

8 4 1

						Description	
Model	S	DT				Screw	DT
	A	E				A	F
	B	F				B	F
	C	G				C	G
	D					D	
Casing			A			A	
			B			B	
			D			D	
Connection				3		G ³ / ₈	
				4		G ¹ / ₂	
				7		R ³ / ₈	
				8		R ¹ / ₂	
				X		Other	
Size				4		75	
				5		100	
				8		150	



Wet Parts Materials (Flanges)

Metal	SUS316, SUS304, titanium, monel, hasteloy, SS, etc.
Metal + lining	Lining materials PTFE, PVC, HTPVC, glass(base material SS), rubber, etc.
Metal + coating	Coating materials PFA
Resin	PVC(60°C or below), HTPVC(80°C or below), PP(120°C or below), PTFE

If the flanges are made of resin, the range will fall below 1 MPa.

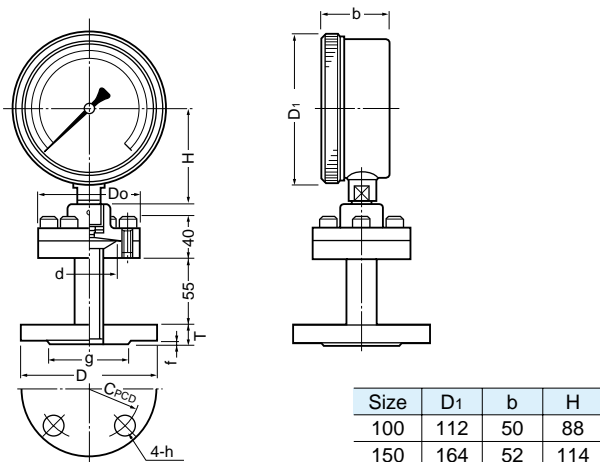
Diaphragm Materials

Metal	SUS316L, tantalum, titanium, monel, hasteloy, zirconium etc.
Non-metallic	PTFE, rubber
Metal + coating	316L + PFA
Others	SUS316L + PTFE, RUBBER

The Teflon diaphragms of the vacuum gauge and the compound gauge are made of SUS 316L+PFA coating.

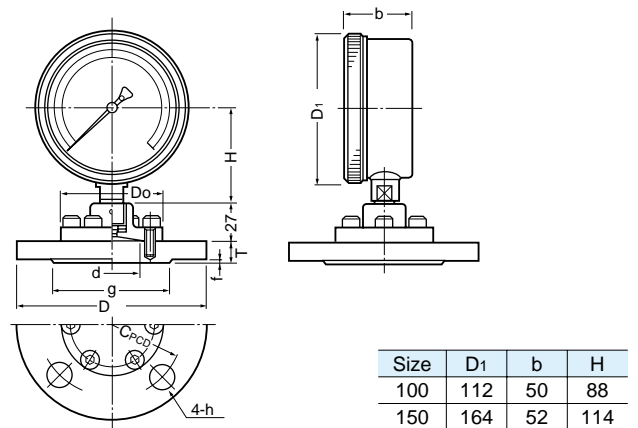
In case the vacuum gauge or the compound gauge is used out of its working temperature range of - 5 to + 45 , the vacuum side is not guaranteed of accuracy.

841 A



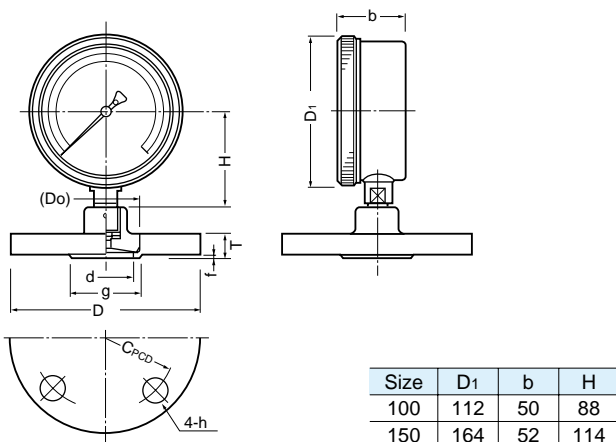
Diaphragm Size	D 48	D 72	D 91
Do	73	97	116
d	42	61	80
Range MPa	0.6 or more	0.1 or more	0.03~0.08

841 B



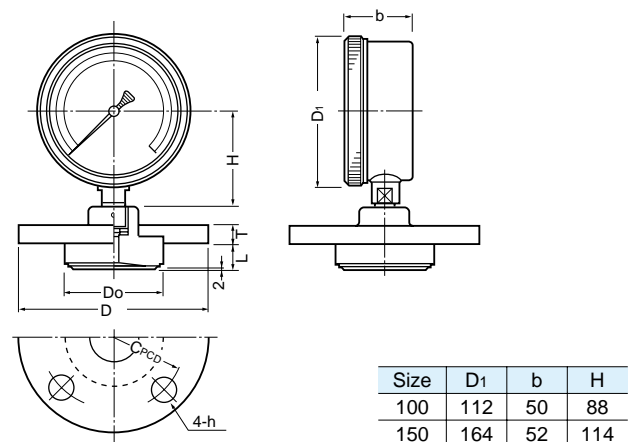
Diaphragm Size		D 48	D 72	D 91
Do		73	97	116
d		37	61	80
Range MPa		0.6 or more	0.1 or more	0.03~0.08
Minimum Flange Size	JIS 10K	40 A	65 A	80 A
	ANSI #150	2 B	2-1/2 B	3 B

841 C



Diaphragm Size		D 48	D 72	D 91
Do		50	75	95
d		37	61	80
Range MPa		0.6 or more	0.1 or more	0.03~0.08
Minimum Flange Size	JIS 10K	20 A	32 A	50 A
	ANSI #150	1-1/4 B	1-1/2 B	2 B

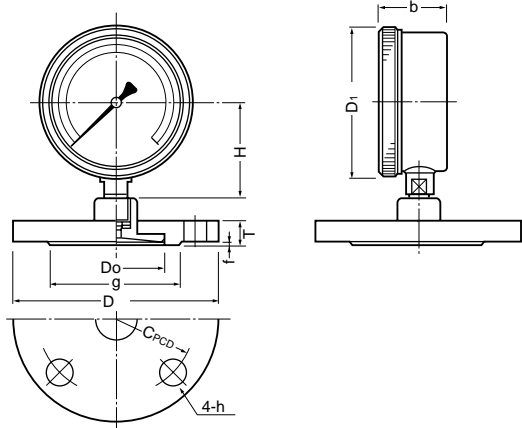
841 DT



Diaphragm Size		D 48	D 72	D 91
Do		50	75	95
Range MPa		0.6 or more	0.1 or more	0.03~0.08
Minimum Flange Size	JIS 10K	32 A	50 A	65 A
	ANSI #150	1-1/2 B	2-1/2 B	3 B

For the information about the flange sizes of 841 C and 841 DT gauges, please see the table above and the figure of the smallest flange size, bottom, on page 2.

841 D

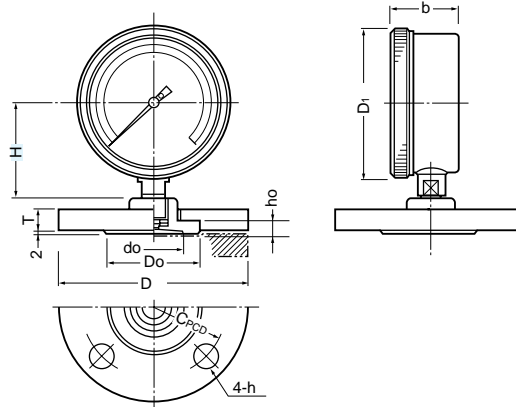


Size	D1	b	H
100	112	50	88
150	164	52	114

Diaphragm Size		D 48	D 72	D 91
Do		50	75	95
Range MPa		0.6 or more	0.1 or more	0.03~0.08
Minimum Flange Size	JIS 10K	32 A	50 A	65 A
	ANSI #150	1-1/2 B	2-1/2 B	3 B

For the information about flange size, please see the table above and the figure of the smallest flange size, bottom, on page 2.

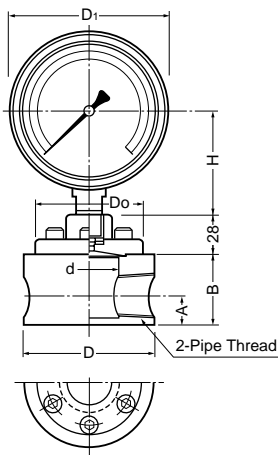
841 E



Size	D1	b	H
100	112	50	88
150	164	52	114

Diaphragm Size (do)		42	48	61	80
Do		68	74	91	120
ho		12	13	13	13
Range MPa		0.5~1.5	0.4~1.5	0.1~1.5	0.03~0.08
Minimum Flange Size	JIS 10K	25 A	32 A	40 A	80 A
	ANSI #150	1-1/4 B	1-1/2 B	2 B	3 B

841 F

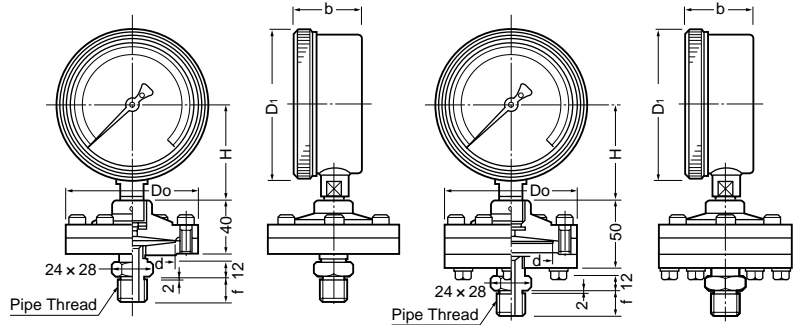


Size	D1	b	H
100	112	50	88
150	164	52	114

Diaphragm Size	D 48	D 72	D 91	
	Do	73	97	118
	d	42	61	80

Screw Size	A	B
R 3/8	18	40
R 1/2	20	49
R 3/4	22	52
R 1	27	55

841 S



Size	D1	b	H
100	112	50	88
150	164	52	114

Connection Screw	f
G.R 3/8	18
G.R 1/2	20

Diaphragm Size	D 48	D 72	D 91
Do	73	97	116
d	42	61	81
Range MPa	0.6 or more	0.1 or more	0.03~0.08

Note) Specifications are subject to change without notice.