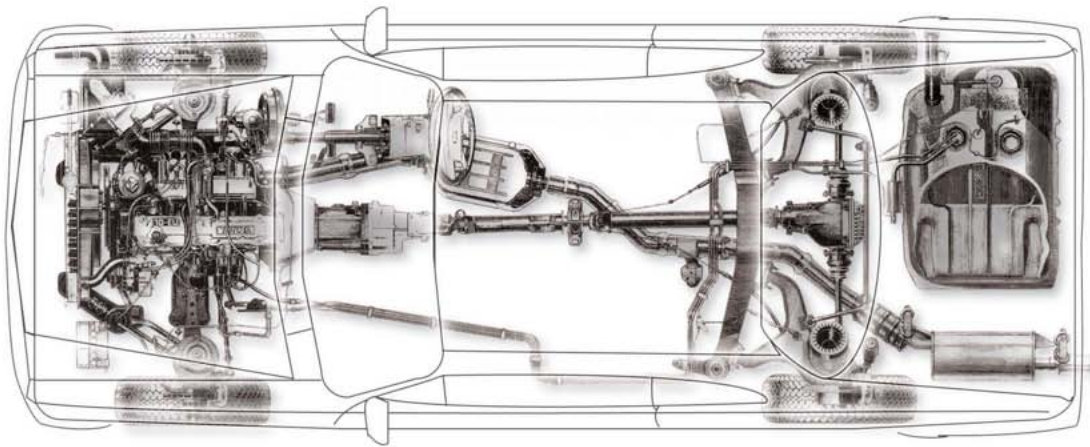


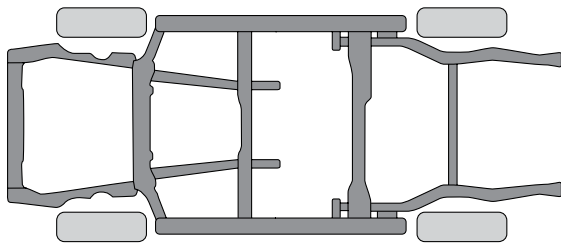
Body Mechanism



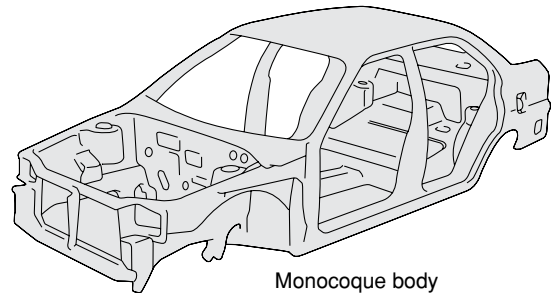
MECHANISM 1

Frame and monocoque body

The framework that is designed as a base for vehicles is called the Frame. The engine & suspension, steering mechanisms, body, are fitted to this. This structure is seen more frequently these days compared with previous models. In recent years, as the merit of a more rigid body that is even more lightweight is achieved, the monocoque body, where the frame is one with the body, is becoming more popular.



Frame



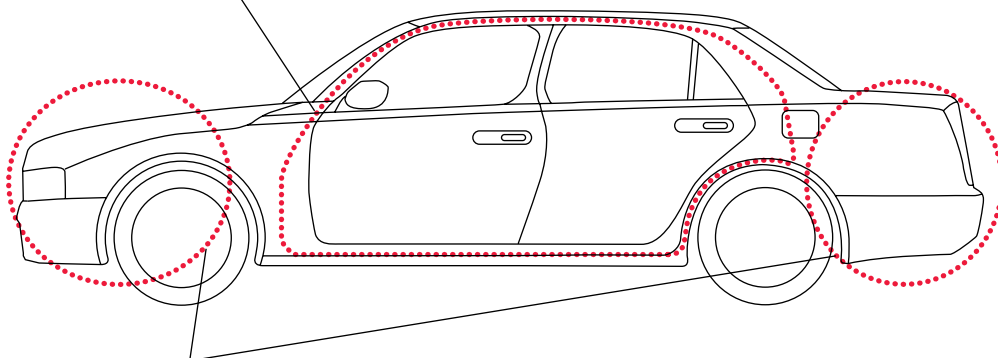
Monocoque body

MECHANISM 2

Impact absorbing body

Monocoque bodies are a countermeasure for impacts. There is a variety of names for these; impact absorbing body, crushable body, etc. However, these body structures all come from the "Front/Rear Impact Absorption" and "Strengthened cabin to protect vehicle occupants" designs. The names differ depending on the maker, however, GOA, ZONE, G-CON, RIZE, MAGMA, TAF, TECT. New cyclic structure bodies are in use at present.

Cabin: Strengthened cabin designed to protect vehicle occupants in an accident.



Front/Rear structure: Front/Rear structural design to absorb impact force at the time of an accident.

No.	L	H	▼kg	☑
AP901	1,016	58	2	1

●BODY COMPASS PAT.P.

Estimates are more accurate.

Damage Diagnosis/Estimates

Usage

This is an exclusive tool (estimates etc.) designed to assess the damage to a vehicle's body after an accident.

Application

From light weight vehicles to normal passenger types (also compatible with foreign vehicles)

Damage assessment range	40~1700mm
Body measurement hole diameter	φ5~10mm

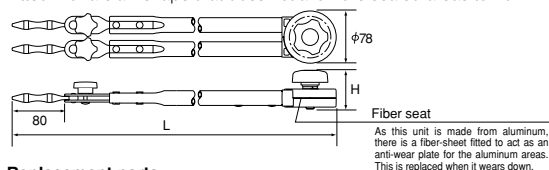
Characteristics

Sealing is made easy by a simple bolt screw-in operation. The operation is faster and easier when using wrenches, such as the ratchet type, etc. (Hexagonal 2-faced width 14mm)

As the center bolt is fitted with a flange, an offset wrench can be used and the wrench will not slip off.

A resin grip is employed for the handle to prevent slippage.

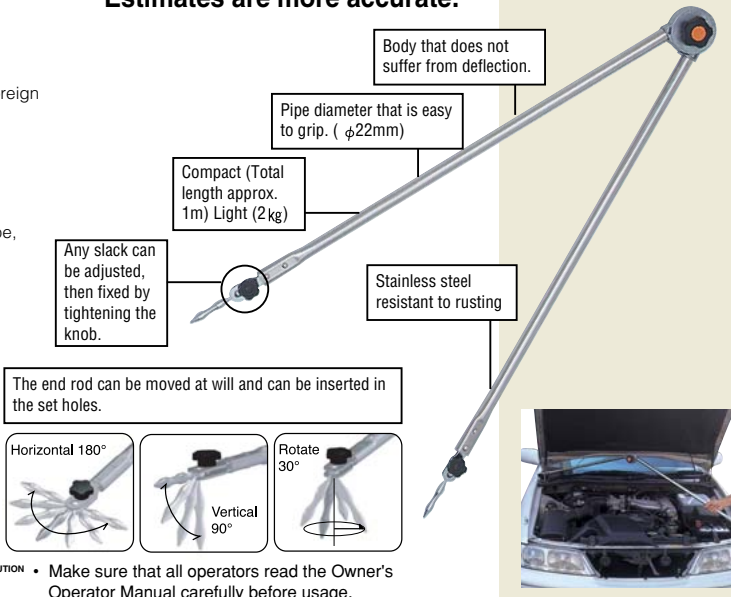
Fitted with a claw shape that does not allow the sealed areas to lift.



Replacement parts

Product name	No.
Fiber-sheet	AP901-1

* Replacement parts are available. Check with your dealer for details.



CAUTION • Make sure that all operators read the Owner's Operator Manual carefully before usage.

SLIDE HAMMER PULLER ATTACHMENT SET

No.	▼kg	☑
AUD55T	13.5	1
SLIDE HAMMER PULLER	AUD5	
SLIDE HAMMER PULLER ATTACHMENT	AUD5-B2,B21,B3,F1	

●SLIDE HAMMER PULLER ATTACHMENT SET (5pcs.)

Repair of Sheet Metal

Usage

Body shop working

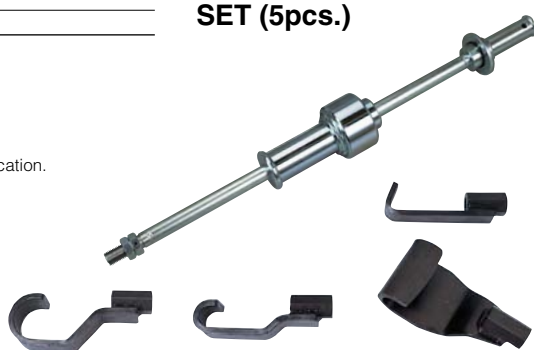
Application

For mini cars, passenger cars and pick up trucks.

Special features

Big and small hammer with weight 3.5kgs and 1.2kgs for wide application.

CAUTION • TAKE YOUR FOOTHOLD SECURELY, MAINTAIN GOOD POSTURE, AND MIND POSITION OF YOUR HANDS WHEN USING THE SLIDE HAMMER.



SLIDE HAMMER PULLER

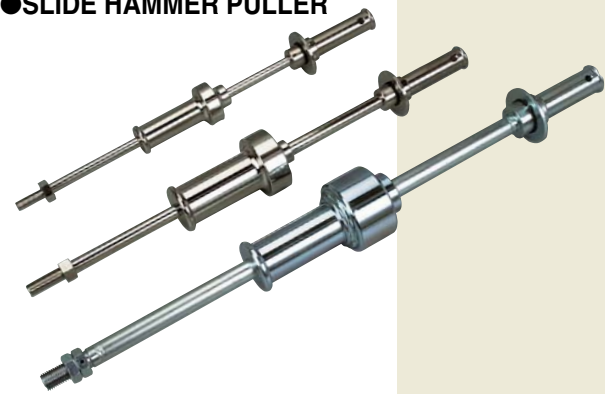
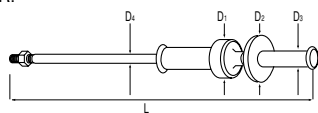
No.	D1	D2	D3	D4	L	Weight Shocker	Screw Size	▼kg	☑
AUD3	60	68	30	14	580	1.2 kg	W9/16-12	2.7	1
AUD4	85	68	30	18	675	3.5 kg	M18 × 2.0	5.5	1
AUD5	96	80	36	25	825	5.3 kg	M22 × 2.5	8.4	1

●SLIDE HAMMER PULLER

Wide range of application with shockers of 3 different weight, i. e. 5.3kgs., 3.5kgs., and 1.2kg.

Applicable to mini/compact cars and small trucks.

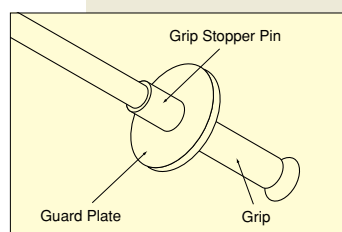
CAUTION • TAKE YOUR FOOTHOLD SECURELY, MAINTAIN GOOD POSTURE, AND MIND POSITION OF YOUR HANDS WHEN USING THE SLIDE HAMMER.



CAUTION

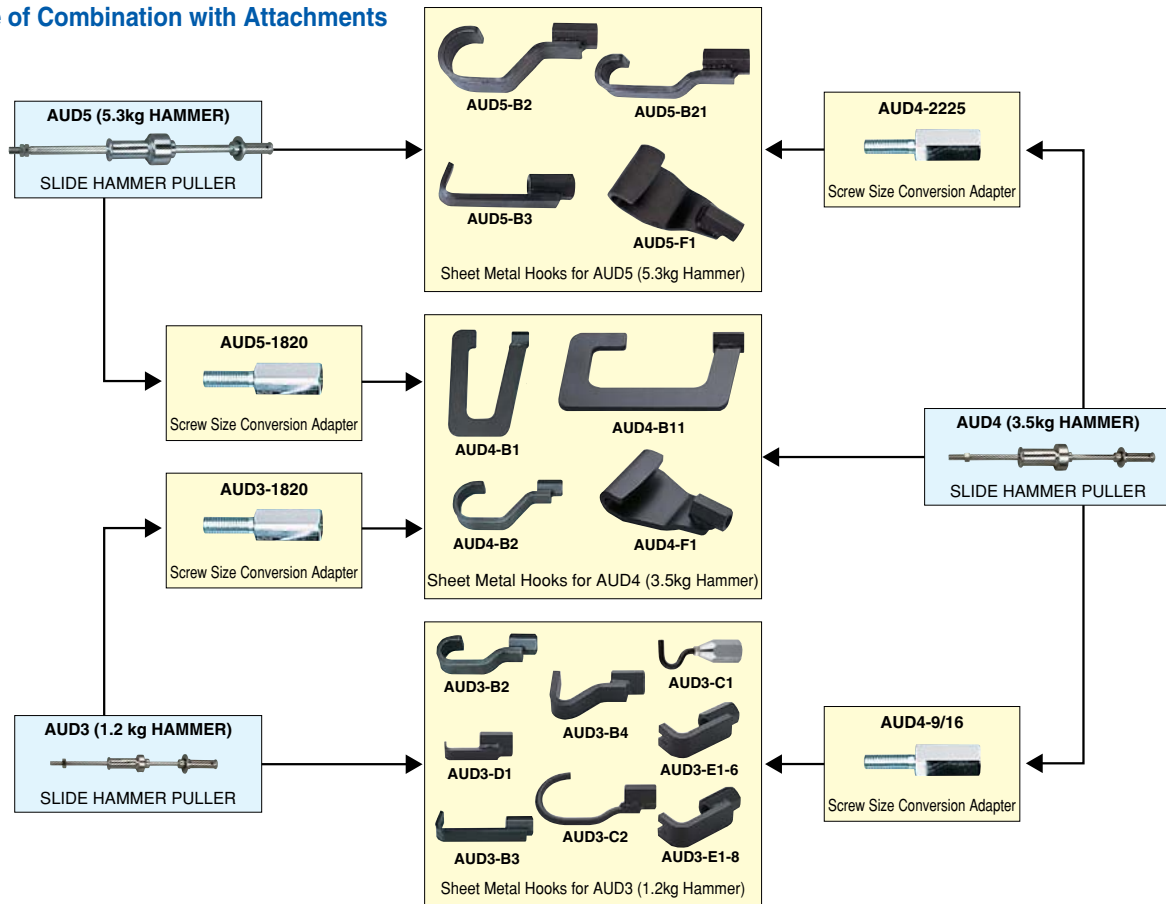
BEFORE USING TOOLS.

- READ INSTRUCTION MANUALS BEFORE USE.
- TAKE YOUR FOOTHOLD SECURELY AND TAKE A GOOD BALANCE WHEN USING.
- FOR YOUR SAFETY:**
- ENSURE GRIP STOPPER PIN HAS BEEN INSERTED. (SEE FIGURE BELOW. AUD5 DOES NOT HAVE THE PIN.)
- HOLD THE TOOL WITH BOTH HANDS TO PREVENT UNEXPECTED MOVEMENT OF SHOCKER.
- USE IT ALONE.
- BE SURE TO INSTALL NUT TO TIP OF SHAFT. DO NOT ALLOW SHOCKER TO MOVE TOWARD TIP.
- BE SURE TO FIX ATTACHMENTS WITH CLOSED NUT.
- APPLY THIS TOOL TO THE PART FREE FROM DAMAGE BY HITTING.
- DO NOT ATTEMPT TO MODIFY A TOOL, OTHERWISE, YOU MAY DEGRADE QUALITY CONSIDERABLY.
- FOR DAMAGE PREVENTION**
- SELECT ATTACHMENTS APPROPRIATE TO THE WORK.
- BE CAREFUL NOT TO DROP THE TOOL. DO NOT PLACE ANYTHING ON THE TOOL.
- DO NOT ALLOW MOISTURE, CHEMICALS, IRON POWDER OR DUST TO COVER THE TOOL.



Use slide hammer puller together with the attachments (separately sold).

Example of Combination with Attachments



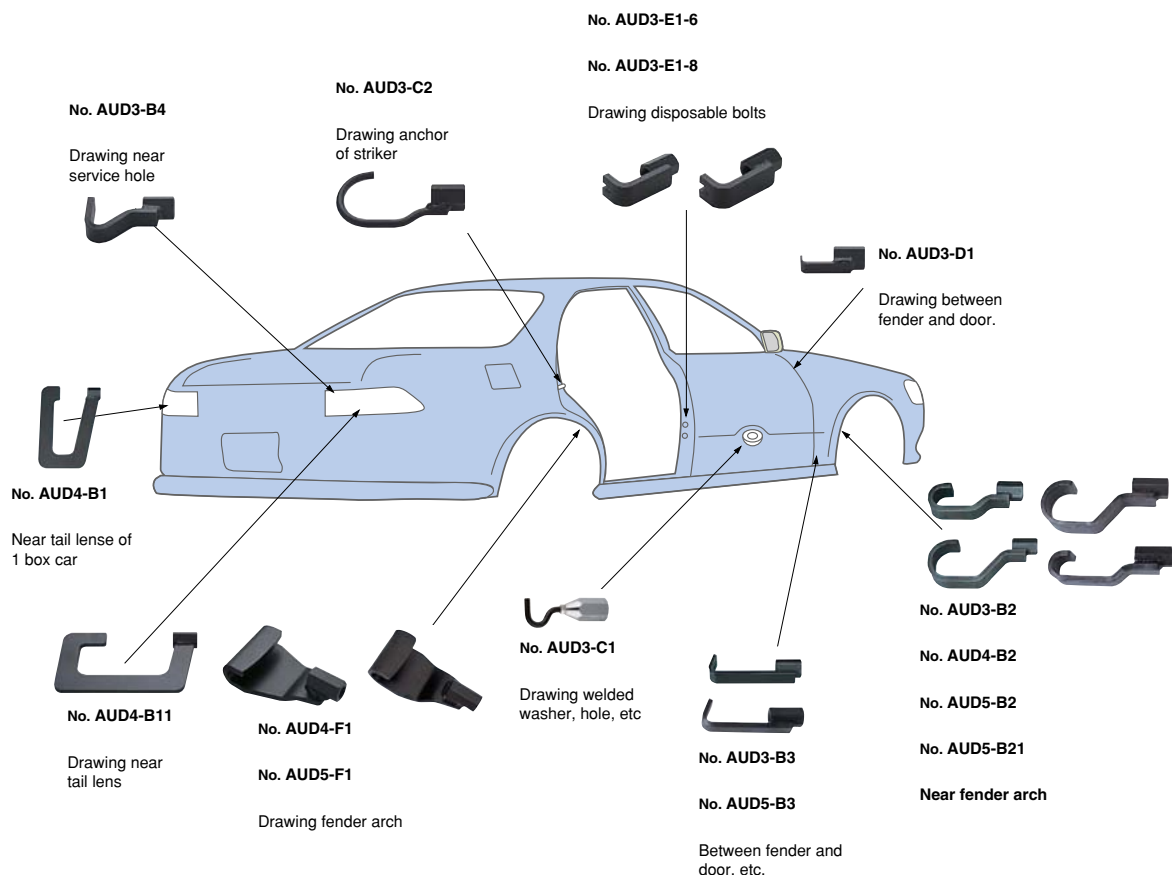
Application

Applicable to mini/compact cars and trucks.

How to Use

- To tip of the slide hammer puller, install attachment appropriate to work.
- Fix the attachment to puller with enclosed nut and offset wrench or similar tool.
- Slide the shocker and start to work.

● Example of Sheet Metal Drawing Operation



Repair of Sheet Metal

1

SLIDE HAMMER PULLER ATTACHMENT HOOK
SLIDE HAMMER PULLER ATTACHMENT SET (4pcs)

No. ATUD304	▼kg 1.35	📦 1
Attachments for Sheet Metal AUD3-B4,C2,D1,E1-8		

SLIDE HAMMER PULLER ATTACHMENT SET (3pcs)

No. ATUD303	▼kg 1.17	📦 1
Attachments for Sheet Metal AUD3-B2,B3,C1		

SLIDE HAMMER PULLER ATTACHMENT

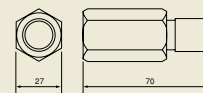
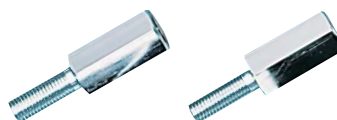
No.	AUD3-B2	AUD3-B3	AUD3-B4	AUD3-C1
Screw Size at Puller side	W9/16-12	W9/16-12	W9/16-12	W9/16-12
Thickness x Width (mm)	9 x 32	9 x 32	9 x 25	Length 105
No.	AUD3-C2	AUD3-D1	AUD3-E1-6	AUD3-E1-8
Screw Size at Puller side	W9/16-12	W9/16-12	W9/16-12	W9/16-12
Thickness x Width (mm)	Length 120	4.5 x 19	9 x 32	9 x 32
No.	AUD4-B1	AUD4-B11	AUD4-B2	AUD4-F1
Screw Size at Puller side	M18 x 2.0	M18 x 2.0	M18 x 2.0	M18 x 2.0
Thickness x Width (mm)	9 x 35	9 x 35	9 x 38	6 x 100
No.	AUD5-B2	AUD5-B21	AUD5-B3	AUD5-F1
Screw Size at Puller side	M18 x 2.0	M18 x 2.0	M18 x 2.0	M18 x 2.0
Thickness x Width (mm)	9 x 35	9 x 35	9 x 38	6 x 100

ADAPTER-SET FOR SLIDE HAMMER PULLER
ADAPTER-SET FOR SLIDE HAMMER PULLER (2pcs.)

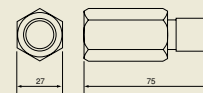
No. ATUD302	▼g 600	📦 1
Adapter AUD3-1820, G1/2		

No. ATUD402	▼g 600	📦 1
Adapter AUD4-9/16, G1/2		

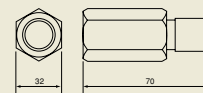
ADAPTER-SET FOR SLIDE HAMMER PULLER



AUD3-1820, G1/2



AUD4-9/16, G1/2, 2225



AUD5-1820, G3/4

No.	Length	▼g	Screw Size (Puller)	(mm)	Screw Size (Object)	(mm)	Outer Hex A/F (mm)
AUD3-1820	70	300	W9/16-12	(14.2 x 2.1)	M18 x 2.0	—	27
AUD3-G1/2	70	300	W9/16-12	(14.2 x 2.1)	G1/2	(20.8)	27
AUD4-9/16	75	300	M18 x 2.0	—	W9/16-12	(14.2 x 2.1)	27
AUD4-G1/2	75	300	M18 x 2.0	—	G1/2	(20.8)	27
AUD4-2225	75	300	M18 x 2.0	—	M22 x 2.5	—	27
AUD5-1820	75	350	M22 x 2.5	—	M18 x 2.0	—	32
AUD5-G3/4	75	350	M22 x 2.5	—	G3/4	(26.4)	32

• Setting 12 kinds of attachments quite easily.
 Adapter for changing screw sizes enables setting 12 kinds of attachments easily for big or small hammer.