

Removal, Installation and Adjustment of Doors

BODY

COURTESY LAMP SWITCH STOPPER

No.	L	D	AAA	▼g	📦
ATP32	79	40	2	25x2	5

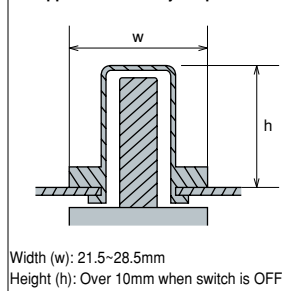
Usage

- When the door has been left in an open state, press the Courtesy switch to shut off the cabin's lamp and to stop the "open door alarm" from sounding.

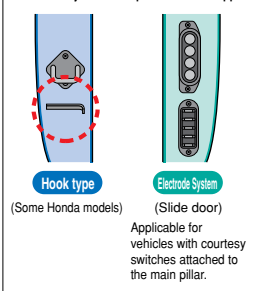
Characteristics

- Simply grasp the lever to apply or remove.
- As the switch has been made out of engineering plastic with glass fiber, it is both robust and light.
- The switch's rubber does not scratch.

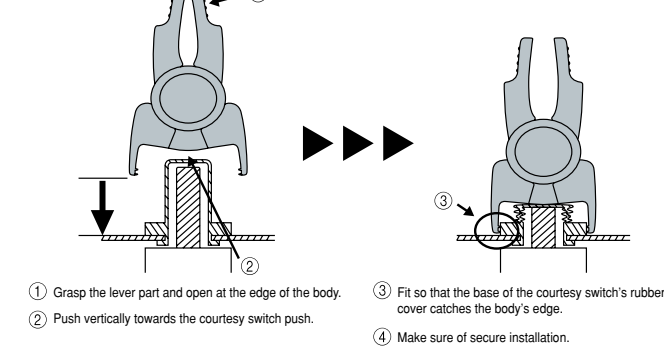
Applicable courtesy lamp switch size



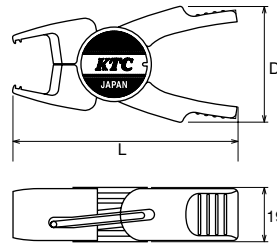
Courtesy switch shapes that are not applicable.



<Method of use>



●COURTESY LAMP SWITCH STOPPER



Stopping the door caution alarm **1**

Photo of use (Front)



Photo of use (Rear)



⚠ CAUTION • Do not close the door when tool in use.

DOOR HINGE BOLT WRENCH SET (2pcs.)

No.	▼g	📦
DMZ2	450	10

Door Hinge Bolt Wrench 12, 14

No.	S	D	L	▼g	📦
DMZ-12	12	19	300	200	10
-14	14	22	300	250	10

Purpose

- Special wrench for adjusting, removing and installing doors.

Features

- Can be used in narrow quarters where conventional wrenches cannot be used.
- Combination of 12x12(14x14) enables using right side and left side effectively.

S	Applicable car Maker
12	Toyota, Nissan, Mitsubishi, Honda, Mazda, Subaru, Daihatsu
14	Toyota, Daihatsu, Mitsubishi

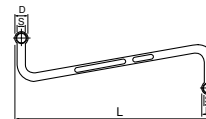
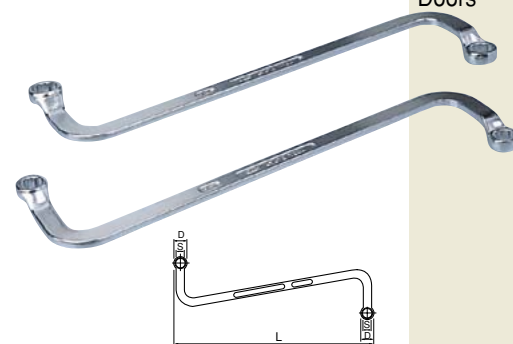
DOOR HINGE BOLT RATCHET WRENCH

No.	S	L	▼g	📦
DMR-12	12	250	250	10

Features

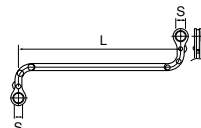
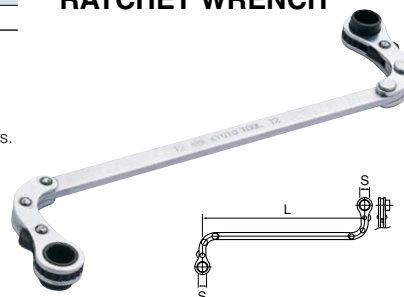
- Ratchet end for effective use in narrow spaces.
- Can be used from upper and lower sides of a hinge and left & right door.
- "S" shaped body for bypassing obstacles.
- Extruded shape of socket enables use on concave press-hinges, bypassing other bolts.
- 12 points ratchet end allows easy fitting into hinge bolts.

●DOOR HINGE BOLT WRENCH SET



Removal, Installation and Adjustment of Doors **2**

●DOOR HINGE BOLT RATCHET WRENCH



Adjustment of Door Striker **3**

●TORX® WRENCH

●TORX® DRIVER

●OTHER TOOLS