

# 4. POWER TOOLS

# ELECTRIC IMPACT WRENCHES



### WARNING

#### Electric Impact Wrench

- Do not use this machine outside its designated usage.
- Do not use outside the wrench's capability or specifications.
- Do not operate while in an awkward posture.
- Make sure that all operators are wearing safety glasses, earplugs, a hard hat, a dust mask, safety boots, and clothing that comply with the work purpose and environment when working.
- Always use head tools (such as sockets) that are compatible with impact wrenches and make sure that the trigger switch is released before replacement.
- Always make sure the head tools, etc. are securely attached before commencing work.
- Do not touch the drive areas or turning areas of head tools.

- Before use make sure there are no irregularities, such as cracks or irregular operating sounds.
- If there are any abnormalities during use, stop the wrench immediately to inspect, and have the wrench serviced if required.
- Always hold the object being worked on securely when using the wrench.
- Do not operate near flammable materials, such as gasoline (petrol) or gas.
- Do not operate the impact wrench in mid-air freely under no-load with the head tool attached as the head tool may fly off.
- Use a domestic 100V power point to recharge. Avoid usage under direct sunlight or rainfall, and outside 10°C~40°C.
- Do not recharge any batteries, other than ones specified for impact wrenches.
- Do not touch the recharger or battery pack with wet hands.
- Do not throw the battery pack into a fire.



### CAUTION

#### Electric Impact Wrench

- Handle the machine with care. Do not throw or drop the machine.
- Do not run an impact wrench freely as it may lead to early wear and tear.
- To prevent early wear and tear, do not use the machine continuously on full power for more than a minute.

- As the impact wrench cannot control the torque, use a torque wrench to tighten if a specific torque is required.
- Do not short circuit the battery pack terminal.
- Always dispose of battery packs in compliance with local government regulations.

## Cordless Impact Wrench

- With a high voltage of 19.2V, there is plenty of power for wheel nut tightening.
- Operation is hassle free as the machine is cordless, and there is no need for air hoses and electric cords.
- The grip has been ergonomically designed, with an anti-slip coating for easy handling.
- Powered by a high performance motor with a cooling fan for power and reliability.
- Comes with a resin carrying case that can store attachments and wheel nut sockets. (Sold separately)
- With the inclusion of a reserve battery, continual hassle free use is possible.
- Features an electronically controlled stepless ratio transmission, with a brake mechanism where rotation will stop when the switch is released.



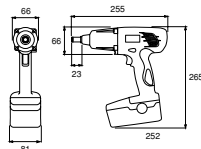
### ● 1/2"sq. Exclusive Wheel Nut Cordless Impact Wrench

No. JAE401		☎ 1
Method	Cordless Rechargeable Electric Impact	
Voltage	19.2V	
Maximum tightening torque	300N·m	
Tightening ability · applicable bolt	M6~M16	
RPM (under 0 load)	0~2500rpm	
Square drive	12.7mm	
Estimated work range per battery	Approx. 150 vehicle wheel nuts	
Weight	1.95kg (body only) 2.95kg (with battery) 6.2kg (net weight)	

\*Maximum tightening torque and work capacity is only an estimate, as actual work range will vary according to conditions.

#### ■ Battery Specifications

- Rechargeable Battery: Ni-Cd
- Battery capacity: 2.0Ah (Panasonic)
- Recharge time: 50 minutes (rapid recharger)
- Recharger: DC-14.4~19.2V
- Power input: AC-100V 50 / 60Hz



#### ■ Replacement parts

No.	Product name	Capacity	▼kg	☎
JAE401-BAP	Battery Pack	2.0Ah	1.0	1



Space for two impact wrench (BP48-17~22) wheel nut sockets.

