

# 8. PLUMBING TOOLS

## PLUMBING TOOLS












**CAUTION** Ratchet pipe cutters, Miniature ratchet tube cutter, Tube cutter, Flex pipe cutter, PVC cutter

- Make sure that you read the Owner's Operator Manual carefully before use.
- Do not use these tools to cut unspecified materials.
- Do not use the tools if they are cracked, chipped, worn or deformed, etc.
- Do not customize tools. The tools quality will decrease significantly if heated or modified.

Application Table of Ratchet Pipe Cutters

\* A special blade (PCRK-S) is needed for cutting stainless steel pipes.

	Product and Product Code	Application	Copper Pipe	Steel Pipe	SUS Pipe	SUS Flexible Pipe	Plastic Pipe		
							Rigid polyvinyl chloride pipes for waterworks	Polyethylene pipes for waterworks	Polyethylene pipes for gas
Ratchet Pipe Cutters	 PCR2-35 PAT. Ratchet Pipe Cutter	Applicable Outer Diameter		15.88~35mm	15.88~35mm				
		Nominal		10~25	13Su~30Su				
		Applicable Thickness		Max.3.2mm	Max.1.2mm				
	 PCR2-66 PAT. Ratchet Pipe Cutter For Large Size	Applicable Outer Diameter		35~66mm	35~66mm				
		Nominal		25~50	30Su~60Su				
		Applicable Thickness		Max.3.8mm	Max.1.5mm				
	 PCRT2-35 PAT. Ratchet Pipe Cutter For Copper And Resin Pipe	Applicable Outer Diameter	15.88~35mm				15.88~35mm	15.88~35mm	15.88~35mm
		Nominal	1/2"~1 1/4"				13~25	10~25	20~25
		Applicable Thickness	Max.1.65mm				Max.3.5mm	Max.5.0mm	Max.3.4mm
	 PCRT2-66 PAT. Ratchet Pipe Cutter For Copper And Resin Pipe, Large Size	Applicable Outer Diameter	35~66mm				35~66mm	35~66mm	35~66mm
		Nominal	1 1/4"~2 1/2"				30~50	25~50	25~50
		Applicable Thickness	Max.2.03mm				Max.4.5mm	Max.6.5mm	Max.5.5mm
	 PCRT-23 D.PAT. Miniature Ratchet Pipe Cutter	Applicable Outer Diameter	6~23mm						
		Nominal	1/4"~7/8"						
		Covered copper piping	1/4"~1/2"						
Rotary Pipe Cutters	 PC2-66 Tube Cutter	Applicable Outer Diameter	6~66mm		6~66mm		6~66mm		
		Nominal	1/4"~2 1/4"						
		Applicable Thickness	Max.2.0mm		Max.1.5mm		Max.4.5mm		
	 ZC30 D.PAT. Tube Cutter	Applicable Outer Diameter	3~30mm				3~30mm	3~30mm	3~30mm
Nominal									
Applicable Thickness		Max.2.0mm				Max.3.0mm	Max.3.0mm	Max.3.0mm	
 FV20 D.PAT. Flex pipe cutter	Applicable Outer Diameter				15.88~21mm				
	Nominal				1/2" - 3/4"				
	Applicable Thickness				Max.0.3mm				
Bladed Manual Pipe Cutter	 PP-30 PVC Cutter	Applicable Outer Diameter					Max.38mm		
		Nominal							
		Applicable Thickness							

\*Please check the merchandise inventory for a product that is marked by  before placing an order.

● **RATCHET PIPE CUTTER** PAT. D. PAT.

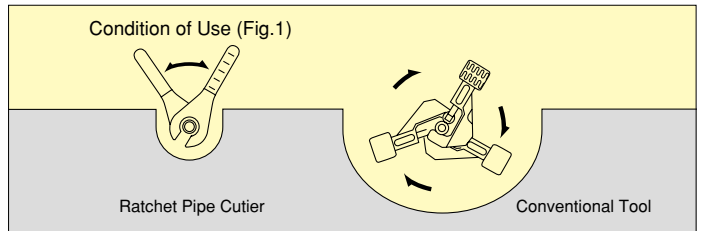
- Cut surface smooth because blade is a thin, special type.
- By automatic feeding mechanism, cutter maintains a stable feeding (force). There will be no excessive force.
- Body is made of aluminum. with chrome plated surface having good wear-resistance.

- Purpose : For cutting various pipes from water supply pipes to electric or gas pipes.

- Cutting is possible with the handle's swing of 8° Works well in cutting operation in a narrow space.



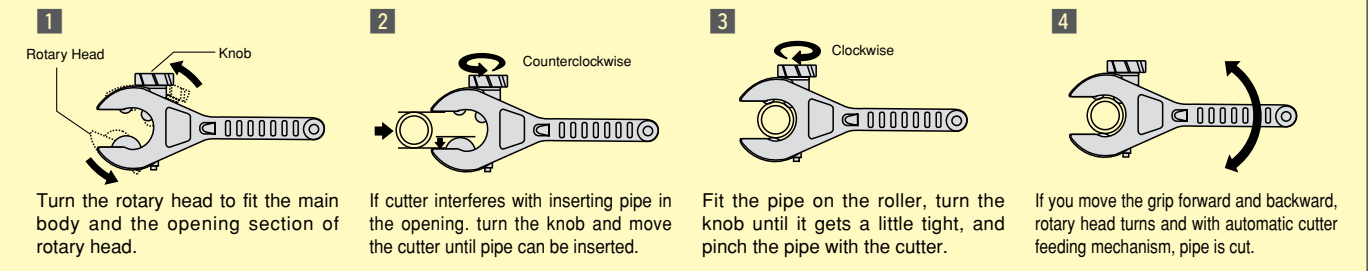
- Has a wide application up to outer diameter of 15.88mm (PCR2-35, PCRT2-35 only).
- Easy cutting in tight space.



- Spare Blades : Spare blades are colored differently for each applicable pipe. It is easy to distinguish.



● **How to Use**



**RATCHET PIPE CUTTER**

No.	L	W	R	H	▼g
PCR2-35	240	102	70	54	960

\*A blade for steel pipes is attached on the main body.

Applicable Spare Blades

No.	Contents	
PCRK-F	For Copper Pipe	1 piece
PCRK-S	For SUS Pipe	1 piece

Applicable Outer Diameter: 15.88~35mm

Copper Pipe: Maximum thickness 1.2mm, Nominal 10~25  
 SUS Pipe: Maximum thickness 3.2mm, Nominal 13Su~30Su

Spare Blades: PCRK-F For Steel Pipes (Silver), PCRK-S For Stainless Pipes (Gold)

● **RATCHET PIPE CUTTER** PAT. D. PAT.



\*Replacement blade for copper pipes is included.

**RATCHET PIPE CUTTER**

No.	L	W	R	H	▼g
PCR2-66	335	135	90	62	1,650

\*A blade for steel pipe is attached on the main body.

Applicable Spare Blades

No.	Contents	
PCRK-F	For Copper Pipe	1 piece
PCRK-S	For SUS Pipe	1 piece

Applicable Outer Diameter: 35~66mm

Copper Pipe: Maximum thickness 3.8mm, Nominal 25~50  
 SUS Pipe: Maximum thickness 1.5mm, Nominal 30Su~60Su

Spare Blades: PCRK-F For Copper Pipes (Silver), PCRK-S For Stainless Pipes (Gold)

● **RATCHET PIPE CUTTER FOR LARGE SIZE**

PAT. D. PAT.



\*Replacement blade for copper pipes is included.

\*Please check the merchandise inventory for a product that is marked by before placing an order.

● RATCHET PIPE CUTTER FOR COPPER AND RESIN PIPE PAT. D. PAT.



Spare Blades  
PCRK-C  
For Copper and Resin Pipes  
Green

\*With 1 spare blade

RATCHET PIPE CUTTER FOR COPPER AND RESIN PIPE

No.	L	W	R	H	▼g
PCRT2-35	240	102	70	54	960

\*Cannot be used on steel or SUS pipes.

Applicable Spare Blades

No.	Contents	
PCRK-C	For Copper & Plastic Pipe	1 piece

Applicable Outer Diameter  
15.88~35mm

Copper Pipe	Rigid polyvinyl chloride pipes for waterworks	Polyvinyl pipes for waterworks	Polyvinyl pipes for gas
Maximum thickness 1.65mm Nominal 1/2~1 1/4"	Maximum thickness 3.5mm Nominal 13~25	Maximum thickness 5.0mm Nominal 10~25	Maximum thickness 3.4mm Nominal 20~25

● RATCHET PIPE CUTTER FOR COPPER AND RESIN PIPE PAT. D. PAT.



Spare Blades  
PCRK-C  
For Copper and Resin Pipes  
Green

\*With 1 spare blade

RATCHET PIPE CUTTER FOR COPPER AND RESIN PIPE

No.	L	W	R	H	▼g
PCRT2-66	335	135	90	62	1,650

\*Cannot be used on steel or SUS pipes.

Applicable Spare Blades

No.	Contents	
PCRK-C	For Copper Pipe	1 piece

Applicable Outer Diameter  
35~66mm

Copper pipe	Rigid polyvinyl chloride pipes for waterworks	Polyvinyl pipes for waterworks	Polyvinyl pipes for gas
Maximum thickness 2.03mm Nominal 1 1/2~2 1/2"	Maximum thickness 4.5mm Nominal 30~50	Maximum thickness 6.5mm Nominal 25~50	Maximum thickness 5.5mm Nominal 20~50

● MINI RATCHET TUBE CUTTER FOR COPPER D. PAT.



MINI RATCHET TUBE CUTTER

No.	L	W	H	R (Operation Radius)	▼g
PCRT-23	140	64	42	45	180

Applicable Spare Blades

No.	Included Items	
PCRK-CM	For Copper Pipe	1 piece

Purpose

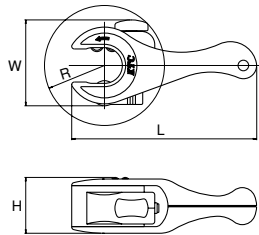
● For cutting copper pipes for air conditioners, and bare or coated copper pipes for water/hot water supply.

Features

- With ratchet mechanism, you can cut pipes even in tight spaces such as wall side or where pipes are located next to each other.
- If work space permits, you can cut pipes by rotating the cutter.
- Cutter's automatic feeding mechanism enables quick cutting without tightening the knob more than once. Difference from conventional type cutters.
- With resin body and aluminum rotary head, the cutter weighs only 180g, allowing you to work with one hand (weight is approximately 2/3 of out conventional model ZC30).
- Streamlined handle shape assures operation in less wearing condition compared with conventional wrench.
- Body in light green which stands out even in somber places.
- Resin used for the body is recyclable polyamide.

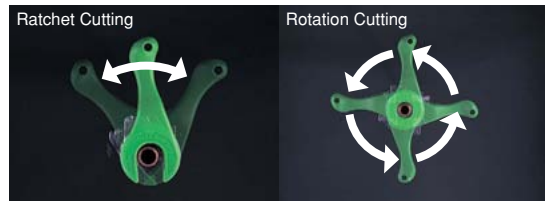
Applicable Outer Diameter  
6~23mm

Bare Copper pipe	Coated Copper Pipes
Maximum thickness 1.24mm Nominal 1/4~3/8"	Maximum thickness 1.24mm Nominal 1/4~3/8"

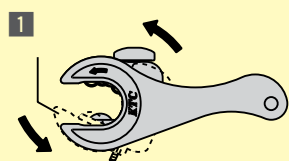


You can cut the pipe even on wall side or in parallel piping.

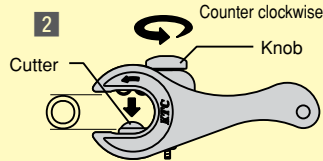
● Two functions with 1 cutter.



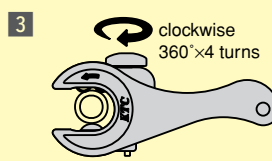
● How to Use



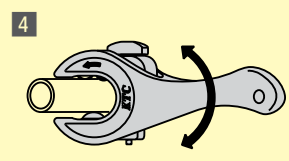
1 Turn the rotary head and fit the main body and the opening section of rotary head.



2 If cutter interferes with inserting pipe in the opening, turn the knob counterclockwise and move the cutter until pipe can be inserted.



3 Fit the copper pipe on the roller, turn the knob clockwise about 4 complete turns.



4 Move the handle forward and backward or rotate to cut the pipe. Automatic cutter feeding mechanism cuts the pipe completely.