

Bearing grease charge

STEERING

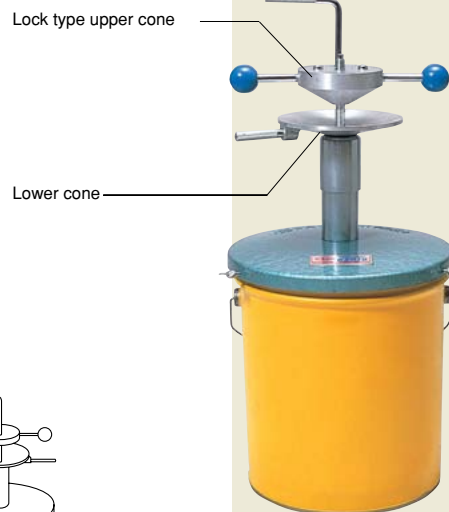
GREASE EXCHANGER HIGHLOAD

No.	Applicable Container	Applicable Bearings	▼kg	📦
GZR18	16kg round cans	φ 15~100	19	1

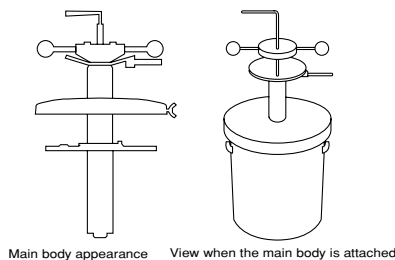
Usage

- Suitable for exchanging grease used in heavy-load bearings of large-sized vehicles.
- For exchanging grease in the hub bearings during inspection and servicing of vehicles for general use.
- **Wide range of applications.**
For bearings of various sizes used in automobiles (from mini-cars to large-sized trucks) and construction machinery.
- **Easy handing, improved work efficiency, keeps hands clean.**
Grease can be exchanged easily, requiring no skill. Operator's hands stay clean and free of grease, so he can proceed working immediately.
- **Reduced grease consumption by eliminating waste.**
Only a minimal amount of grease is required, Grease can be used completely to the bottom of a can, so you can save more grease than is possible with manual exchange operation.
- **Simple, highly reliable mechanism.**

● GREASE EXCHANGER "HIGHLOAD"



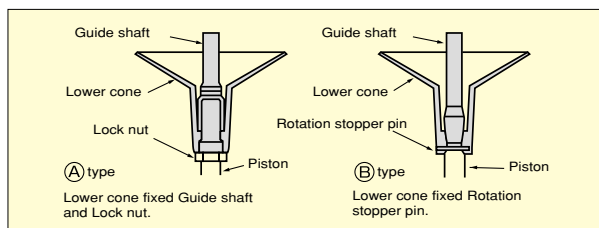
• CZR18 is the heavy-duty model of GZ18.



GREASE EXCHANGER HIGHLOAD ASSY.

No. GZR182	▼kg 2.2	📦 1
Upper cone	Applicable Bearings φ 15~100	
Lower cone		
Handle		
Rotation stopper handle		
Guide shaft		

- This kit of replacement parts for upgrading a GZ18 grease exchanger into a "HIGHLOAD" type heavy-duty grease exchanger can be used only with the (A) type model. Adaptability can be confirmed by pressing the bellows below the lower cone and checking if the lock nut is present.
- GZ18 can be used as GZ18 heavy duty model by assembling with these parts.



● ASSEMBLY PARTS FOR GREASE EXCHANGER "HIGHLOAD"



GREASE EXCHANGER

No.	Applicable Container	Applicable Bearings	▼kg	📦
GZ18	16kg round cans	φ 15~100	8.2	1

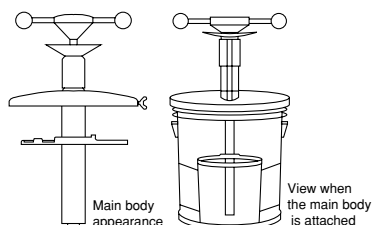
Usage

- Grease charging heavy load bearings of large automobiles.
- Grease charging to hub bearing of various automobiles in inspection or service.

Features

- Work time can be reduced to about 1/7 compared to the previous method.
- Useful in wide range of application.
- Keeps your hands clean and raises work efficiency.
- Grease in the can can be used up completely so waste can be eliminated and grease can be saved.
- KTC®-original pumping unit exchanges grease easily by using fresh grease to push out old grease.

● GREASE EXCHANGER



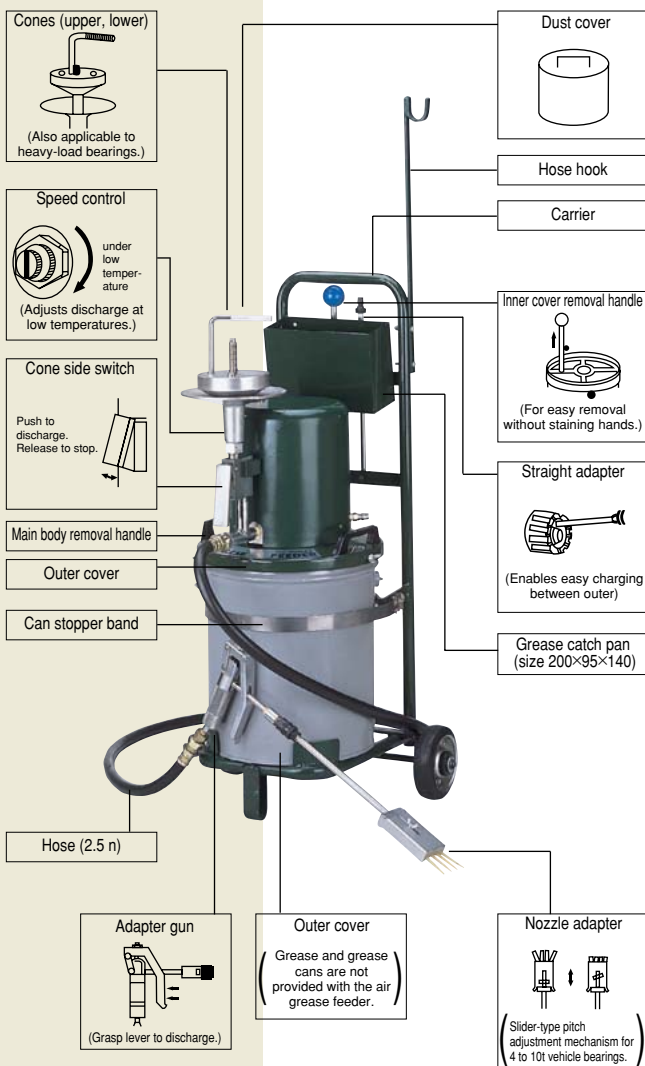
Condition of Use



● AIR GREASE FEEDER



● Name of parts and their applications



AIR GREASE FEEDER

No. AVG35	▼kg 30
Pump type	Air-driven plunger pump
Size	460×360×1,190
Discharge	500g/min. on nozzle side (No.3 grease, 29°C, no load)
Discharge pressure	75-80kg / cm ²
Air pressure	6-9.8kg / cm ²
Grease type	No.0-No.3
Can	16kg pail can
Temperature Condition	0-40°C

Applicable bearings

Cone side	Bore 15 to 100 mm
Hose side	Nozzle Adapter Nozzle adapter Bore 45 to 90 mm (bearing pitch 15 to 21 mm, equalant. to front-rear) (tapered roller bearing for 4 to 10 t vehicles)

Usage

Dedicated equipment for feeding grease into tapered roller bearings during grease exchange or supply for medium-to large-sized trucks.

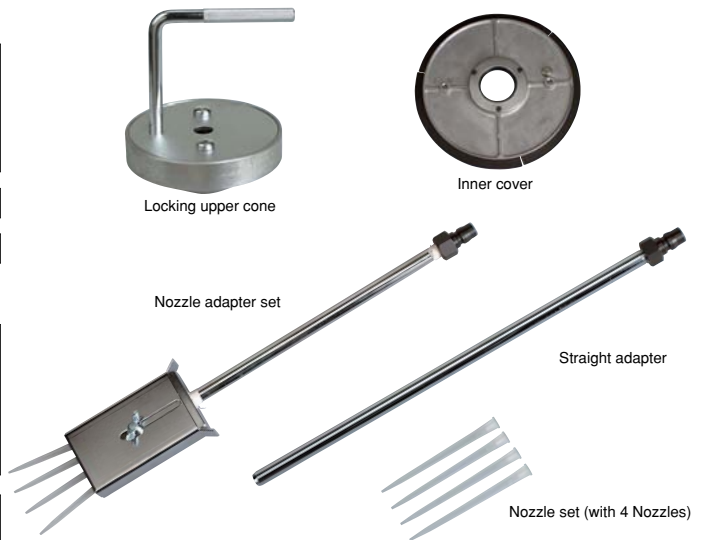
Application

Bearings with cone side bores of 15 to 100 mm, hose side bores of 45 to 90 mm and bearing pitches of 15 to 21 mm.

Features

- With the nozzle adapter, fresh grease pushes out old grease, without no need to remove each bearing.
- Grease can also be fed into a removed bearing by installing it on the cone.
- Grease can be fed even at around -10°C by proper piston speed control operation.
- Foreign objects (such as moisture and dirt) in compressed air are filtered out by an air filter, preventing air regulator operation failure.
- The built-in air regulator ensures air supply at optimal pressure.
- Easy operation and setup reduces work time.
- The carrier is equipped with a can stopper band and plate that prevents the grease can from falling or being displaced.

- CAUTION** DO NOT PULL THE LEVER EVEN AFTER REMOVAL OF THE AIR HOSE. OTHERWISE, GREASE MAY SCATTER INTERNALLY DUE TO RESIDUAL PRESSURE.
- STORE IN PLACES WHERE YOU CAN AVOID FREEZING.
 - USE CLEAN AIR FOR INPUT.



Supply parts

No.	Part Name	Q'ty
AVG35-2	Locking upper cone	1
-4	Inner cover	1
-6	Nozzle adapter set	1
-7	Straight adapter	1 (with 4 nozzles)
-7-7	Nozzle set	1

* These parts are also optionally available.

