

1.Removing wheel→2.Removing tie rod→3.Removing pitman arm→4.Removing lock nut→5.Separating & removing drive shaft & hub→6.Disassembling/Installing drive shaft band→7.The attaching of the drive shaft to the chassis→8.Attaching the wheel

**LOCK NUT CHISEL**

No.	a	b	D	L	ℓ	▼g	📦
AS404	0.4	4.5	50	173	51	350	10

**Purpose**

- Removal (Attachment) of sealed type lock nuts on drive shafts.

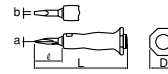
**Application**

- Most of sealed type lock nuts used on drive shafts.

**Features**

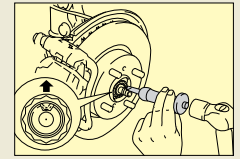
- Sealing and pulling up of sealed part lock nuts is possible with one single chisel.
- Ship-shaped tip facilitates pulling up of the caulked part by hitting the chisel head.
- Grip, made of rubber, is easy to handle and is provided with the flange for protection of your hand.
- Forged and strong!

● **LOCK NUT CHISEL**



Removing lock nut

**4**



**SLIDE HAMMER PULLER**

No.	D <sub>1</sub>	D <sub>2</sub>	D <sub>3</sub>	D <sub>4</sub>	L	Shocker Weight	Screw Size	▼kg	📦
AUD3	60	68	30	14	580	1.2kg	W9/16-12	2.7	1
AUD4	85	68	30	18	675	3.5kg	M18×2.0	5.5	1

**Purpose**

- Body shop working.

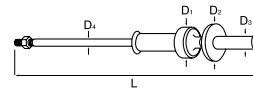
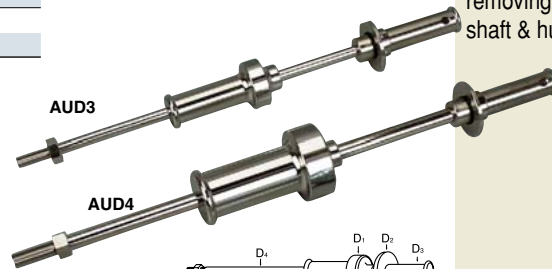
**Application**

- For mini cars, passenger card and pick up trucks.

**Special features**

- Safety conscious design.
- Big and small hammers with weight 3.5kgs and 1.2kgs for wide application.

● **SLIDE HAMMER PULLER**



Separating & removing drive shaft & hub

**5**

**CAUTION** • WHEN USING SLIDE HAMMER, MIND WORKING POSTURE AND THE POSITION OF HANDS. IMPROPER POSITION CAN RESULT IN INJURY.

**SLIDE HAMMER PULLER ATTACHMENT**

**Screw size conversion adapter set for slide hammer**

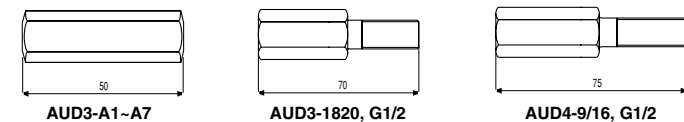
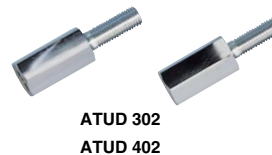
No.	ATUD302	▼g	600	📦	1
AUD3-1820	Screw Size Puller Side	W9/16-12	Object Side	M18×2.0	
AUD3-G1/2	Screw Size Puller Side	W9/16-12	Object Side	G1/2	

No.	ATUD402	▼g	600	📦	1
AUD4-9/16	Screw Size Puller Side	M18×2.0	Object Side	W9/16-12	
AUD4-G1/2	Screw Size Puller Side	M18×2.0	Object Side	G1/2	

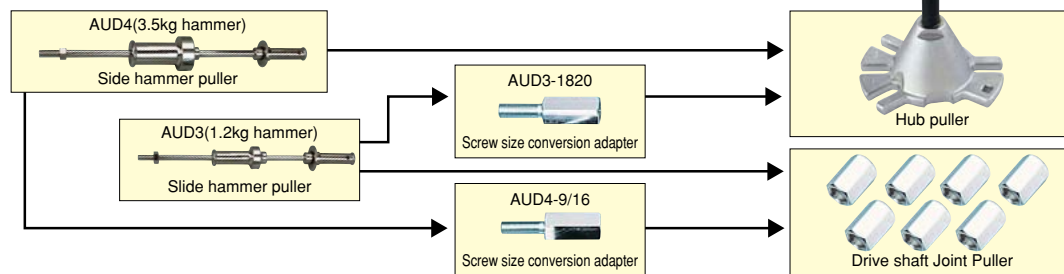
**Screw size convertible adapter set for slide hammer puller**

No.	ATUD307	Screw Size Puller Side	Object Side
AUD3-A1		W9/16-12	M18×1.5 Suzuki
AUD3-A2		W9/16-12	M19×1.5 Toyota
AUD3-A3		W9/16-12	M20×1.0 Nissan, Daihatsu
AUD3-A4		W9/16-12	M20×1.5 Mazda
AUD3-A5		W9/16-12	M22×1.0 Nissan
AUD3-A6		W9/16-12	M22×1.5 Nissan, Mazda, Mitsubishi, Daihatsu
AUD3-A7		W9/16-12	M24×1.5 Nissan, Honda

● **SLIDE HAMMER PULLER ATTACHMENT**



**Combination**

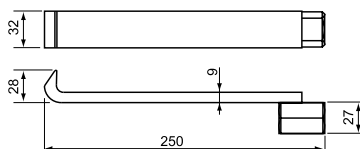


**DRIVE SHAFT REMOVER FOR SLIDE HAMMER**

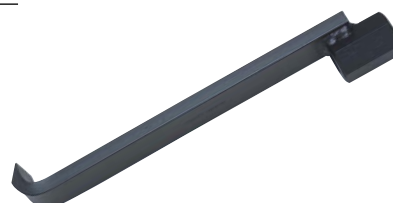
No.	Size	Screw Size (puller-side)	▼g	📦
AUD3-AD1	250 × 32 × 28	W9/16-12	660	1

**Purpose**

- Removing drive shaft from trans-axle (FF vehicle).
- Used exclusively with slide hammer puller (AUD3).



● **DRIVE SHAFT REMOVER FOR SLIDE HAMMER**



Separating & removing drive shaft & hub

**5**

