

**5** Separating & removing drive shaft & hub

**●SLIDE HAMMER PULLER ATTACHMENT**



**HUB PULLER FOR SLIDE HAMMER**

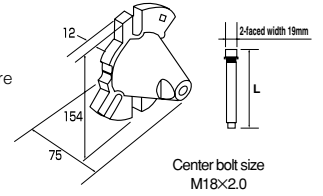
No.	Applicable Hub	▼kg	📦
AS30	PCD100mm~140mm Bolt M14smaller	1.4	1

**Purpose**

- Drawing axle shaft and brake drum.

**Special feature**

- Can be used for both 4 holes and 5 holes types.
- Can hold reactive force from driving tool as square drive (3/8"sq.) used.
- Open-end wrench usable as width across flats provided. Can hold counterforce.



**Replacement parts**

No.	Product name	L	2-faced width	▼g	📦
AS30-1	Center bolt (M18 × 2.0)	138	19	240	1

**●HUB PULLER (FOR 6 HOLES) FOR THE SLIDE HAMMER PULLER**



**HUB PULLER FOR SLIDE HAMMER**

No.	Applicable Hub	▼kg	📦
AS309	PCD140mm M14	2.5	1

**Usage**

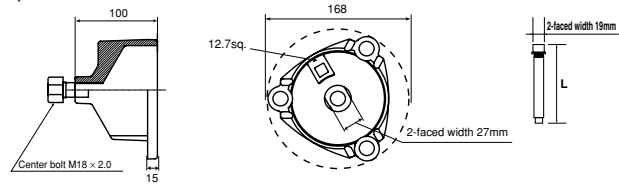
- Pulling out the axle shaft/brake drum and pushing out the drive shaft

**Application**

- 6 hole type hub for vehicles.

**Characteristics**

- Deep hole design is compatible with the front free wheel hubs on 4 wheel drive vehicles.
- With a 12.7 sq. drive, force application can be maintained by the drive tool.
- The 27mm 2-faced width allows the application force to be maintained while using adjustable wrenches.



**Replacement parts**

No.	Product name	L	2-faced width	▼g	📦
AS30-1	Center bolt (M18 × 2.0)	138	19	240	1

**●HANDY BAR**



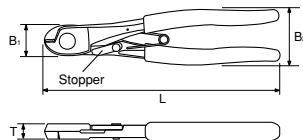
➔ P.263

**6** Disassembling/Inst  
alling drive shaft  
band

①Removing  
Boot Band



**●BOOT BAND CUTTER**



**BOOT BAND CUTTER**

No.	B <sub>1</sub>	B <sub>2</sub>	T	L	▼g	📦
AS402	24	41	11	193	260	10

**Usage**

- Cutting the boot or boot band of the drive shaft

**Application**

- The stainless boot band of the drive shaft on light weight vehicles to standard vehicles.



- Rubber drive shaft boot

**Characteristics**

- Cutting can be conducted while the boot band is attached.
- The boot band can also be cut, increasing overall operation speed. (Fig. 1)
- The same tool can be used to cut the boot after cutting the band. (Fig. 2)
- The attached spring allows easy opening while the stopper allows storage in a compact form.

Pushing the stopper while holding the handle will fix the tool in a position where the handle is closed, reducing the total storage space occupied by the tool. (Fig. 3)

\* Springs are available as replacement parts. Check with your dealer for details.

