



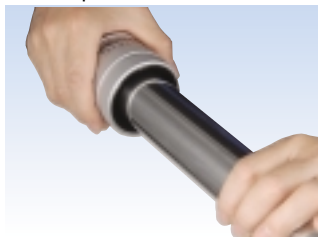
## TUBE REAMER for Stainless steel pipe

### TR 835S·1254S

Chamfering of the external and internal edges of piping  
 Beautiful finish of piping from stainless steel pipe to copper tube by chamfering them with 40 blades.  
 Optimal for piping of stainless steel, copper, aluminum, brass, and hard polyester resin.  
 Material of the main body: Aluminum  
 Material of the blade: SAE8660

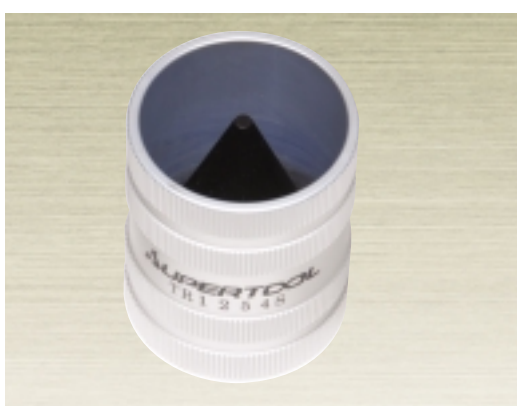
**New series**

Example of use



(Unit : mm)

Item No.	Chamfering capacity for external and internal diameters	Full length	Diameter	Weight (g)	Remarks
TR 835S	8 ~ 35	60	48.5	200	
TR 1254S	12 ~ 54	84	67.0	450	



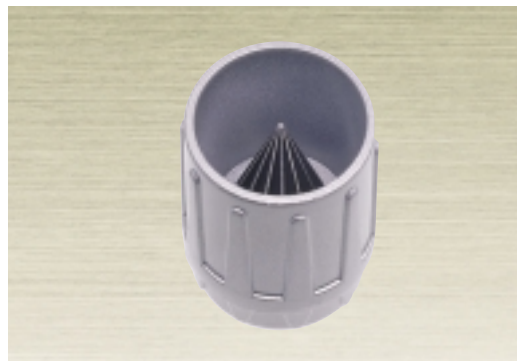
## TUBE REAMER

### TR 322

Internal diameter surface removal is smooth due to 11 pieces of blades.  
 Very useful for copper, aluminum, steel, and PVC.

(Unit : mm)

Item No.	Internal diameter surface removal Ability and size (External diameter)	Full length	Diameter	Weight (g)	Remarks
TR 322	3 ~ 22 ( 1 / 8 ~ 7 / 8 )	60.5	43	180	



## TUBE REAMER

### TR 127

Internal and external diameter surface removal.  
 Plastic body attached with 3 blades.

(Unit : mm)

Item No.	Internal and external diameter surface removal Ability and size (External diameter)	Full length	Diameter	Weight (g)	Remarks
TR 127	5 ~ 38 ( 3 / 16 ~ 1 1 / 2 )	61	58	75	

